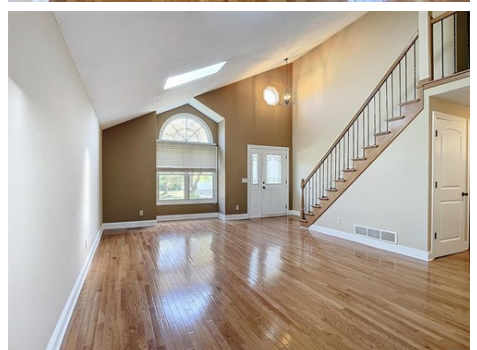
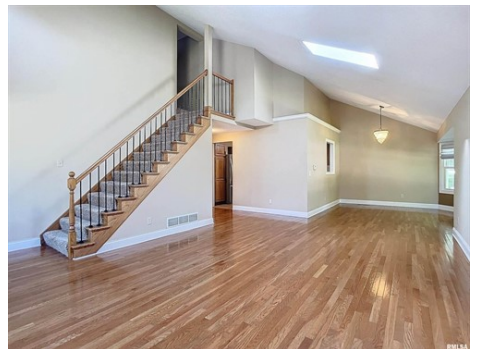




\$ 380,000



1780 Plymouth Dr, Bettendorf, IA 52722

- » Beds: 3 | Baths: 2 Full, 1 Half
- » MLS #: QC4254268
- » Single Family | 2,582 ft² | Lot: 10,454 ft²
- » More Info: [1780PlymouthDr.IsForSale.com](https://www.1780PlymouthDr.IsForSale.com)



Rich Bassford CRS., GRI.
 Melissa Greer, Amanda
 DuPrey, Rob Bermes, Tim
 Holevoet, Leann Noack and
 J.C. Brenny
 (309) 215-9400 (The Bassford
 Team)
 (309) 797-5800 (Office)
info@thebassfordteam.com
<https://www.richbassford.com/>

RE/MAX Concepts
 4555 Utica Ridge Road
 Bettendorf, IA 52722
 (309) 215-9400

Discover this move-in ready 2-story corner home in Bettendorf, featuring 3 bedrooms, 2.5 bathrooms, and an oversized 2-car garage. Highlights include lofted ceilings, many windows, and spacious rooms. Hardwood floors span the entire main level, which includes a spacious living room with vaulted ceilings, a family room with built-in shelves and a wood-burning fireplace, a large kitchen with ample cabinets, and a convenient main-floor laundry room. Upstairs, the primary bedroom is generously sized and features a private en suite with a soaking tub and separate shower. Two additional bedrooms and a full bathroom complete the upper level. The full, finished basement offers a large rec room and a versatile bonus room. Outside, enjoy the fenced-in yard from the big deck and take advantage of the extra storage in the shed. Siding was power washed and the roof replaced (07/2024). Dont miss this opportunity to own a beautiful, spacious home in a great location. And did I mention it's move-in ready?! Schedule a viewing today and make this delightful property your own!

